



**STERLING  
MONTESSORI**

EST. 1997

**APRIL 2021  
ELEMENTARY PLAN A/BLENDED  
LEARNING RETURN TO SCHOOL**

**Plan A - Lower Elementary  
(1st - 3rd Grade)**

**Plan A - Upper Elementary 4th & 5th  
Grade**

**Plan B - Upper Elementary 6th Grade**

**Begins April 6, 2021**



# GENERAL OVERVIEW

## **Our Approach to Distance Learning and Blended Learning:**

The Distance Learning Track and the Blended Learning Track each have very different characteristics and require different types of support and methods to help children grow socially, emotionally and academically. Sterling Montessori is committed to meet the parent and student's needs under each of these models.

**Beginning April 6, 2021, Elementary students in grades 1st-5th currently in the Blended Learning track will return to school each week,** rather than being separated in Group 1 and Group 2. LE and 4th/5th grade students on campus will no longer receive Zoom or Seesaw lessons due to the fact that they are now on campus consistently. These students are required to meet the instructional working hours and therefore will **not** be dismissing at 12:00pm on Fridays.

**6th grades students will continue on the modified Plan A, as currently in place.**



# GENERAL OVERVIEW



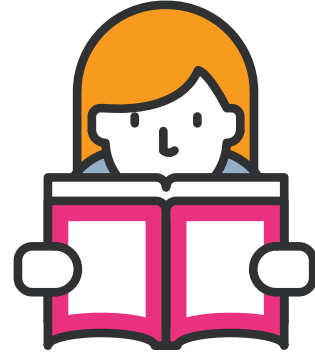
## Plan A ELEMENTARY GRADES 1st - 5th Minimal Social Distancing

LEARNING ENVIRONMENT	HEALTH PREAUTIONS	TEACHING & LEARNING
<ul style="list-style-type: none"><li>• Elementary students in each class of will return to campus 5 days/week, each week.</li><li>• Students will remain in the classrooms currently assigned for the remainder of the school year.</li></ul>	<p><b>Enhanced Health Protocols</b></p> <p><b>Minimal Social Distancing</b></p> <p><b>**See requirements &amp; recommendations in the Reopening Guide for families</b></p>	<ul style="list-style-type: none"><li>• Face-to-face instruction will follow a typical Montessori work cycle for 5 days a week., every week.</li></ul>

# GENERAL OVERVIEW

## Plan B

Blended Learning:  
**ELEMENTARY GRADE 6**  
Moderate Social Distancing



LEARNING ENVIRONMENT	HEALTH PREAUTIONS	TEACHING & LEARNING
<p><b>Blended Learning Track:</b></p> <ul style="list-style-type: none"><li>• Returning 6th grade students will be separated from the Upper Elementary cohort and will form their own community. They will be split into two smaller groups (number of students to be determined based on how many choose this track).. Each group will alternate 1 week on campus (face-to-face) and 1 week at home with work plans, Google Classroom and/or work packets to support the practice and repetition of the on-campus (face to face) lessons.</li></ul>	<p><b>Enhanced Health Protocols for Plan B</b></p> <p><b>Moderate Social Distancing</b></p> <p><b>**See requirements &amp; recommendations in the Reopening Guide for families</b></p>	<ul style="list-style-type: none"><li>• Face-to-face instruction will follow a typical Montessori work cycle for 5 days a week., alternating weeks.</li><li>• Blended Learning will reinforce Montessori lessons and the use of online learning platforms will continue.</li></ul>

## Week on Campus: Face-to-Face

The time on campus (face-to-face) will be full of lessons with the hands-on Montessori materials, socialization, and opportunities to repeat the lessons presented with hands-on materials. Opportunities to learn how to be independent and develop the necessary executive functioning skills to be successful in a group Montessori educational setting. Again, 1-5th grade will attend each week.

In an effort to allow our teachers to have planning time and prepare for the next group we will be having an **early dismissal on Friday's at 12:00pm for Upper Elementary, 6th grade students ONLY**. This will also allow for each classroom to be professionally disinfected and sanitized. **Elementary, 1st- 5th grade, students will remain on campus until the 3:30pm dismissal.**

All students and teachers to wear **clean, well-fitted masks** at all times while on campus.

## Overview Sample: What it Looks like in the Classroom

### Student Arrival

#### Beforecare:

- Beforecare begins at 8AM
- Drop-off will be in the front main parking lot in the loop
- Students are screened and have a temperature check by staff at the car. Parents should remain in the car until the student is cleared.
- Students go straight to their classroom patio door.

#### Morning drop-off:

- Drop off is between 8:30-9:00am
  - Temperature check and health screening will take place before the child is able to go to class. Parents should remain in the car until the student is cleared.

#### Late drop-off

- Anytime after 9:00am
- Any student who arrives after 9:00 am will be required to park & go straight to the class.
  - The classroom teacher will conduct a temperature check and health screening and log them in as late
- Students will use hand-sanitizer before entering the room

**NO USE OF LOCKERS BY UE STUDENTS**

**Plan B: As students enter environments, distancing protocols will be followed.**

## Morning Work Cycle 9-11:45am

- Classroom morning meetings will take place with minimal distancing for 1st - 5th grades. Moderate distance will be in place for 6th graders (see below). Grace and Courtesy lessons with expectations are to be established in each classroom community.
- Movement around the room is permitted, however, teachers will reinforce social distancing throughout the work cycle as much as possible
- Incorporating frequent hand-washing opportunities throughout the work cycle
- Small group lessons and large group lessons will take place with limited distancing for 1st through 5th grade students and 6 feet apart for all 6th graders.
- Seating arrangements: Students will be spaced around the classroom as much as possible. Seating will be limited to 1-2 students at a table with distance between them. Floor tables to be in use.
- Teachers will do their best to determine if the material needs to be cleaned and sanitized based upon how the child works with the materials (did they sneeze/cough on materials, put hands in mouth and then touch material, etc.)
- Wash hands before joining lessons
- Allow time between activities for proper cleaning and disinfection of high-touch surfaces
  - Paper-based materials, such as books and loose-leaf paper, are not considered high-risk for COVID-19 transmission, and do not need additional cleaning or disinfection procedures.
- Personal fidgets only
- No use of the water fountain

### **Snack**

- One student at the snack table unless outdoors. Students to sit at the snack table or outside.

## Morning Work Cycle 9-11:45am (cont.)

### 11:15-11:45am: Lunch Preparations

- Before lunch, the teacher will clean and sanitize tables (soapy water first, then sanitizer using one paper towel per table; use paper towels from shelves near snack table)
- Clean/sanitize high touch areas (light switches, door knobs, sinks, etc)
- Clean/sanitize classroom bathrooms
- Spray down materials using Sanitizer spray
- Set lunch boxes on chairs
  - **No microwaves will be used at this time**
  - **No cloth placements allowed. Plastic placemats allowed (it is best if they are cut to fit in the lunchbox) and must be taken home and washed daily.**

**Plan B: Students: Minimal Movement in order to ensure distancing protocols; Lessons to accommodate increased protocols; Seating follows 6ft apart requirements; Use of Individual Materials; Increased Markings**

## Lunch 11:45am - 12:15pm

- Students and teachers will wash hands for at least 20 sec
- Students eating at the same table will stay safe by doing the following:
  - Using a sneeze guard screen when two or more students are at a table
  - Sitting facing in the same direction at a table
  - Students will eat outside as much as possible
- **No microwaving of food at this time**
- Once lunch is complete students will put their lunch boxes away and clean table with a soapy water solution
- Once lunch is completed - students wash their hands and line-up to go outside.
- Teacher cleans tables while students are at recess

**Plan B Students: Students are required to follow the 6ft apart Social Distancing requirements during lunch.**

## Outside Playtime 12:30 - 1:00pm

### **Outside Playtime:**

- Children are escorted to the outside playground by their teacher
- Students will wear a mask
- Students may take a mask break if sitting outside the classroom away from other students.
- Students may use equipment and balls
- Playground/field are divided into 2 parts. 2 LE classes and 2 UE classes can be out at one time.

**Plan B: Students are required to follow the 6ft apart Social Distancing requirement during recess.**

## Afternoon Work Cycle 1:00-3:00pm

### **Student return to classroom through patio door**

- Students and teachers will use hand-sanitizer before entering the classroom OR Students and teachers will wash hands for at least 20 seconds
- After students have settled after lunch, students will have their temperature checked again
- Ends with student jobs - Jobs would need to be individualized

**Plan B: Students are required to follow the 6ft apart Social Distancing requirement during Afternoon Work Cycle.**

### **Specials**

- PE will meet Weekly in person
- Music will meet once per week
- UE Spanish will meet online
- Art resources will be provided

## Dismissal

### **Monday - Thursday (Monday - Friday for 1st-4th grade)**

#### **3:30 - 3:45pm**

- At the end of day, all cleaning processes are repeated and class is set up for the following day.

### **Early Dismissal Fridays @ 12:00pm (for 6th grades)**

- Teachers check work from all students
- Collaborate and Plan lessons for the following week.



# BLENDDED MODEL: GRADE 6

## Overview: Remote Week at Home

During this week students will be given work packets and Seesaw assignments for students to work on independently. These lessons are follow-up lessons to the work they did with the Montessori hands on materials while during face-to-face

Remote students are invited daily to join the morning circle time to allow the children to maintain a connection with their classmates throughout the week and receive a group lesson. Teachers will check in 1X a week with the remote students to check on their progress and motivate them to complete their tasks before they return to school the following week.

## Remote Schedule: Morning Work Cycle

- **8:30 - 9:00am** Join Morning Meeting to take attendance and listen to community announcements as well as any lessons.
- **9:00 - 11:15am** Work Cycle (May include specials times) Complete daily plan. Work to be found in Seesaw, Google Classroom.
- Check-ins AM or PM with Teacher ( as needed in each environment).

**12:00 - 1:00pm Lunch/Recess**

## Afternoon Work Cycle

- **1:00 - 1:30pm** Silent Reading
- **1:30 - 3:00pm** Work Cycle (May include specials)

### All Remote Specials

- PE will meet 2x Weekly in person
- Music will meet online once per week
- UE Spanish will meet online



# DISTANCE LEARNING TRACK

## What it looks like

Sterling will continue the Distance Learning Track for those families who are not ready to return to campus.

The schedule and learning Platforms will remain the same as the current Plan C.

