

Middle School Reopening Q&A

Sterling Montessori Middle School



— 01





Important Docs

Click on Links



[Sterling Reopening](#)

School-Wide Plan



[MS Blended Learning](#)

On-Campus Learning



[MS Distance Learning](#)

Virtual Learning From Home





Agenda

Expectations
Plan B
Questions



Expectations

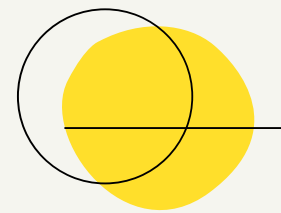
Today's Meeting

- Keep yourself on mute until it's your turn to ask a question
- If you have a question, write it down and use the raise hand feature in zoom so a teacher can note the order in which questions are asked
- You may also write questions in chat box and a teacher will gather them for the question portion at the end
- Limit one question per person until we've been able to get through everyone's first question
- We will end promptly at 4:30 for the next Q&A
- We are here to discuss how we will be reopening, not whether or not we should reopen



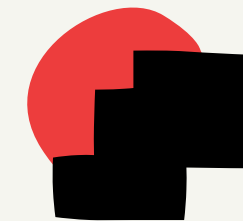


2 Options



Blended Learning Track

On-Campus Learning
Alternating Weeks
Virtual Program
Same Pod, Teachers, Advisor, Schedule



Distance Learning Track

Off-Campus Learning
Virtual Program
On-Campus Social Time - Optional
Same Pod, Teachers, Advisor, Schedule



Objective: facilitate community well-being

Health and safety protocols

Provide a workspace for students - families where having student/s at home is not allowing them to be successful

Sustain connection and growth for all students

Robust academic program





Reasons for a Virtual Program

— 07

Resources

- Teachers with 56-70 students
- Limited teaching staff
- Teaching 3 distinct groups

Curriculum

- Building program since June
- Study guide as Montessori material
- Class expectations/procedures/GC

Consistency

- Pod, teachers, advisor, schedule
- Relationships
- Familiarity with learners





Questions

From Google Form

— 08





What about siblings?

Siblings in the Blended Learning track will be tracked together by week.

Can we use our own laptop?

Yes. Because we have a shortage of devices on campus, we will allow and encourage Middle School students to bring their own device. This will help us maintain our 1:1 program.

Could this plan change?

Possibly. The Board and Administration will be reassessing a number of factors each month to ensure we are able to offer a successful and safe program for all students.

— 09

How will students be grouped?

We will try to keep students in rooms with their pod teachers but this will depend on the number of families that opt into each track.





What about specials?

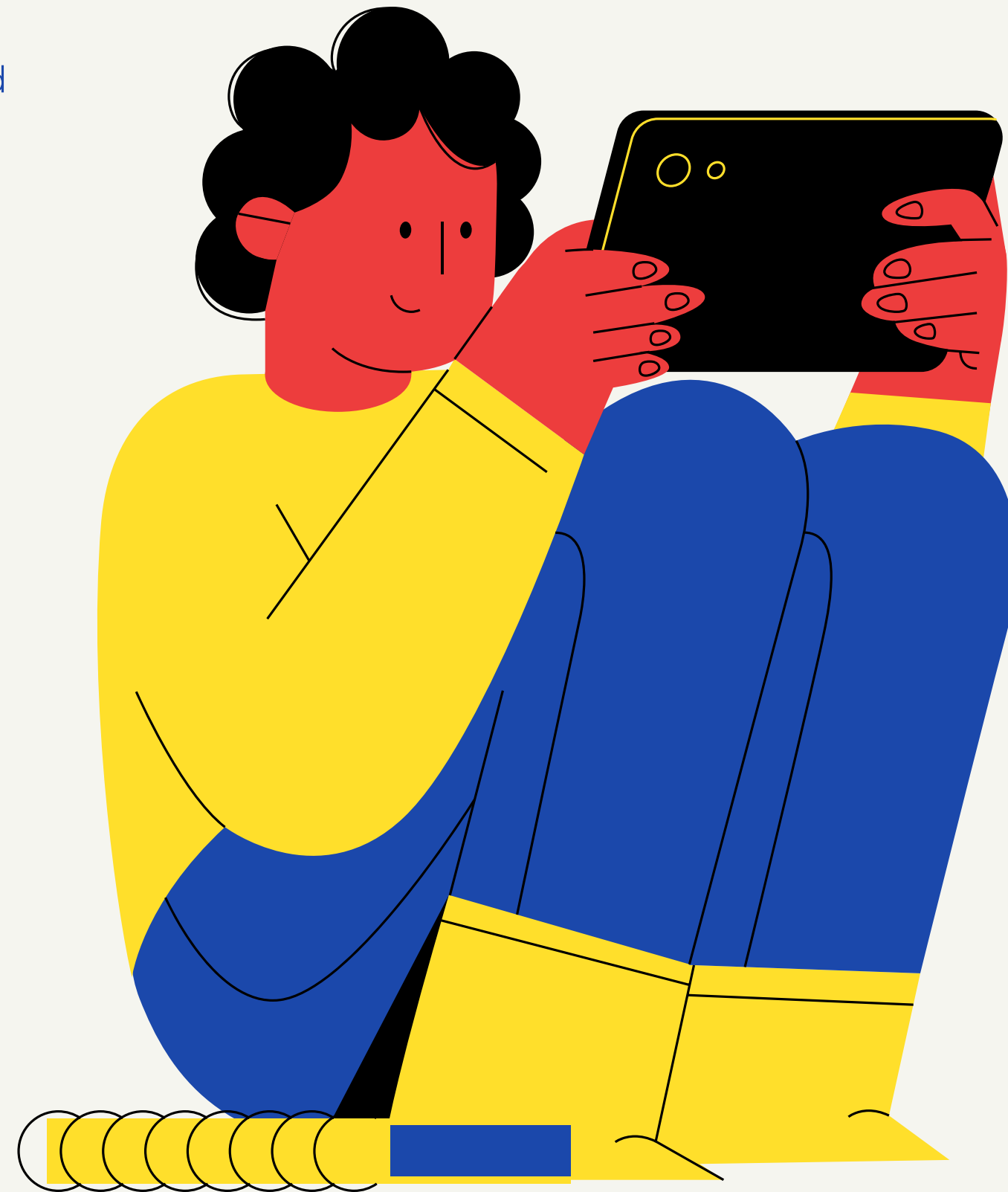
PE will be offered outdoors for Blended Learning on-campus learners. All other specials will be offered virtually.

Can I change my mind from the start of the school year to choose the Blended Learning track?

Yes. The questionnaire families filled out at the start of the school year (July) is no longer valid. Every family must fill out a new questionnaire. This decision will be for the remainder of the school year (Jan.-June).

How will students learn from home?

Our program will remain consistent for all students regardless of what track they choose or what group they are in for Blended Learning.



Health & Safety





Choose Track

Complete This Form
by Oct. 22

— 12





"Raise Hand" Questions Chat Questions

— 13





More
Questions?
Please Reach Out

Justin Tosco

DIRECTOR OF MIDDLE SCHOOL

Phone Number

919-462-8889 EXT.420

Email

JTOSCO@STERLINGMONTESSORI.ORG

